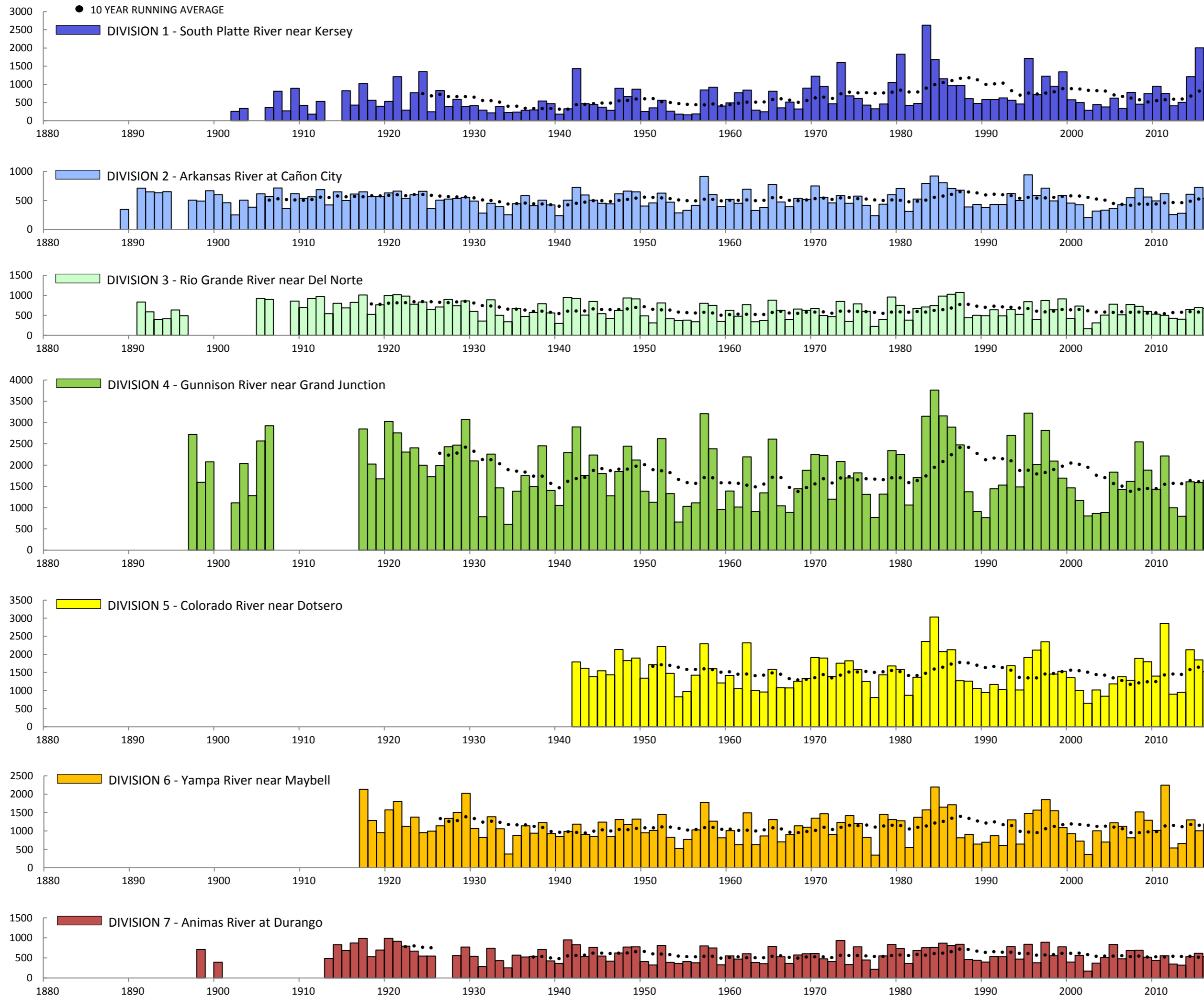
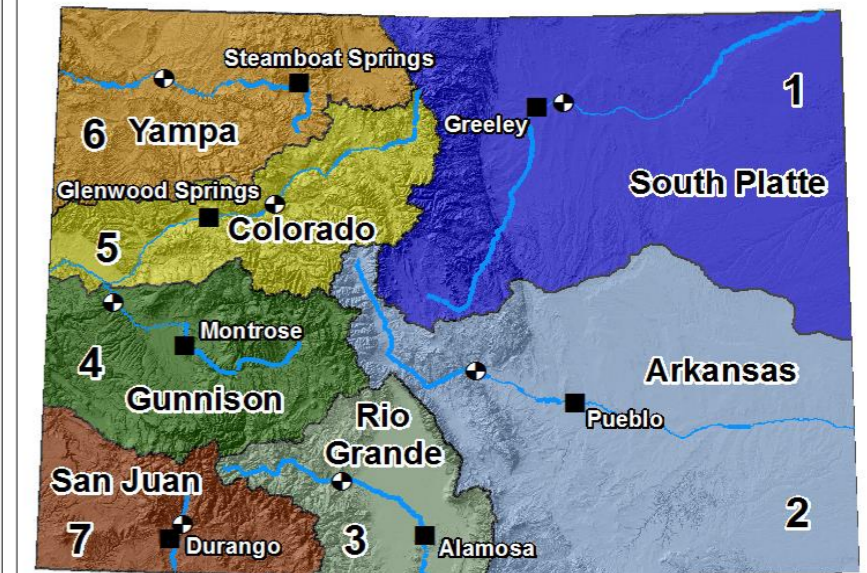


ANNUAL RUNOFF IN 1000 ACRE-Feet



Annual totals by water year (Oct 1 - Sep 30). Current water year data may be provisional. Years with incomplete gauge data have been omitted.



Map of Colorado Showing Water Divisions

- USGS Surface Runoff Gauge
- Division Water Court
- Water Division

The Natural Resource Conservation Service water supply outlook, as of May 1, 2017, contains the following estimates of runoff for the April through July 2017 period at the following gauges (Note: Not all gauges shown to the left are forecasted, in which case a representative gauge from the outlook report was chosen):

Div.	River	April - July Forecasted Runoff (1000 AF)	Percent of 30 year Average
1	So. Platte River at South Platte *	176	78%
2	Arkansas River at Pueblo Reservoir Inflow *	485	107%
3	Rio Grande River near Del Norte *	505	98%
4	Gunnison River near Grand Junction	1670	113%
5	Colorado River near Dotsero	1480	106%
6	Yampa River near Maybell	790	84%
7	Animas River at Durango	430	104%

\* Runoff forecasted for April - September 2017 period.

# COLORADO RIVERS HISTORICAL ANNUAL RUNOFF

May 2017



1221 Auraria Parkway | Denver, CO 80204  
 303-455-9589 | 800-453-9589 | Fax: 303-455-0115  
 www.LREwater.com

facebook.com/lrewater

Follow @LREwater